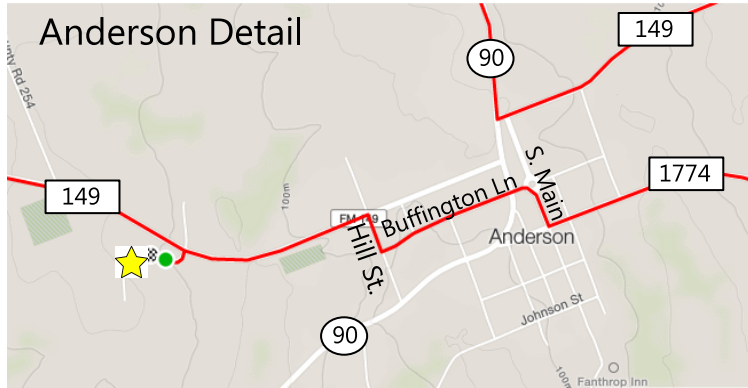


Anderson Detail



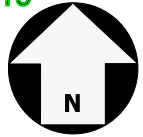
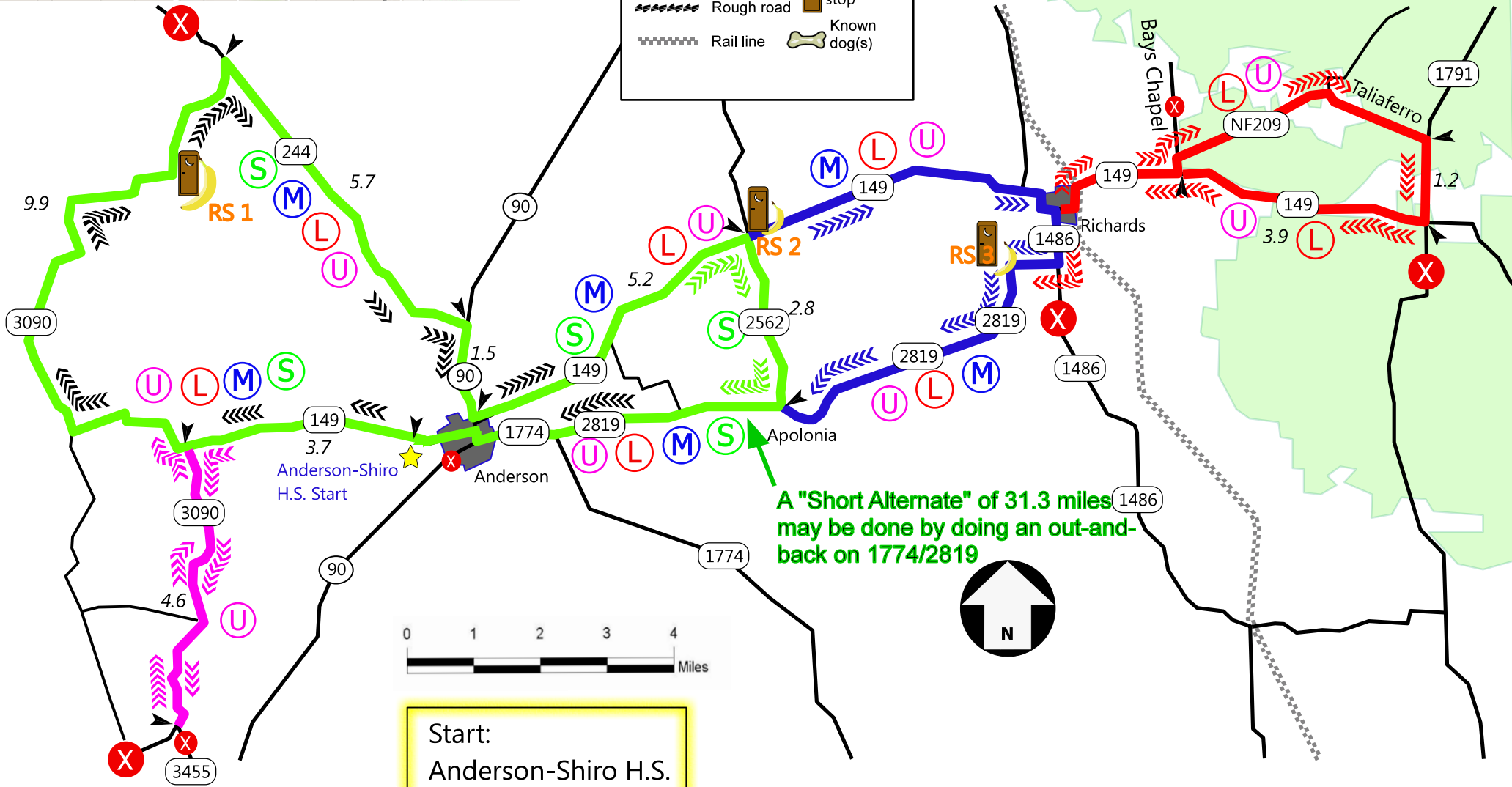
Anderson I

Ultra	65.9 miles
Long	56.6 miles
Medium	42.7 miles
Short	34.3 miles

- Known store (red dot)
- Rest stop (banana icon)
- Deluxe rest stop (brown building icon)
- Known dog(s) (bone icon)
- 9.5 Miles between (arrow icon)
- Rough road (hatched line icon)
- Rail line (dashed line icon)

SAG Drivers (for March 23, 2024 only)

Mike McCelvey: 281 785-4158
 Max Deisch: 713 202-8323
 Alexandra Fuelling: 409 739-6094



Start:
 Anderson-Shiro H.S.
 1345 FM 149
 Anderson, TX 77830



Club Officer-in-Charge: Eunice Garcia, 832 273-5406